



chamET

M A K E C H A T B O R D E R L E S S

CONTENTS

01



About Us

02



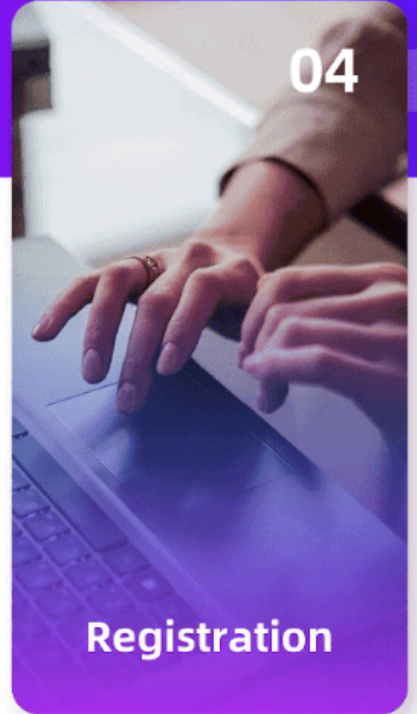
Commission
and Settlement

03



Rules

04



Registration



“About Us”

We look forward to cooperating with you as soon as possible!

01

Here is an experienced Internet enterprise which was found in 2013, our products involve in tourism, entertainment, education, social media, and so on. There are over 200 employees, who serve users or customers from all over the world.

02

Chamet is one of our extraordinary products. It has been running for **4 years**. Our daily active users are around **1,000,000** now and it keeps growing every day. We connect people with different cultural backgrounds to make chat borderless.

03

Not only can we provide an amazing platform for your hostesses to earn, but also an extraordinary platform to let you strengthen your team because you can invite and bind some other agencies with you here. Your revenue will grow by increasing the number of sub-agents, which is our most significant feature.

Earning of Hostesses

01 Earning of Hostesses

Hostesses earn the Beans by video calls and gifts. The earning of their video calls range from 1,200 Beans/min to 6,000 Beans/min. A hostess can set any price in between this range which she thinks her callers can afford. Moreover, hostesses can also earn the Beans by receiving gifts, which have different values of the Beans.

02 The Value of The Beans

10,000 Beans=1 USD



The Commission Ratio of Agencies

The agent daily commission ratio is determined by your hostesses' and sub-agents' total earning in the recent 30 days. The total daily revenue is made up of two parts:

01 Part One

Total daily cashable amount of all his hostesses.

02 Part Two

Total daily revenue of all his sub-agents.



The Commission Ratio of Agencies

The agent daily commission ratio is determined by your hostesses' and sub-agents' total earning in the recent 30 days. Check the chart below to know the details.

| Class | A | B | C | D | E | F | G | H | K |
|-------------------------------------|-------------|-------------|--------------|---------------|---------------|----------------|----------------|------------------|-------------------|
| Total earning in the recent 30 days | USD ≥500 | USD 1500 | USD 5,000 | USD 15,000 | USD 50,000 | USD 150,000 | USD 500,000 | USD 1,500,000 | USD 50,000,000 |
| Commission Ratio | 5 % | 10 % | 15 % | 18 % | 20 % | 22 % | 24 % | 26 % | 30 % |

*For new agents (Registration duration is less than 30 days), the agent daily commission ratio is determined by your hostesses' and sub-agents' total earning from your registration day to yesterday.

Calculation Of Your Commission

01 Part Of Hostesses

your corresponding commission ratio * total daily cashable amount of all of your hostesses

02 Part Of Sub-agents

Your daily commission fees from EACH sub-agent:
(your daily commission ratio - your sub-agent's daily commission ratio) * this sub-agent's total daily revenue
(You may need to calculate this part more than once depending on how many sub-agents you have)
(The commission ratio is floating according to the total earning of the recent 30 days)




Example of calculation of agent's Commission

| | | | | |
|---------|---------|--|--|----------------------|
| agent A | agent B | 101\$ earning today (100\$ cashable amount today) | 3338.88\$ (Total earning in the recent 30 days) | 10%(B's ratio today) |
| | agent C | 501.2\$ earning today(500\$ cashable amount today) | 15,888.68\$(Total earning in the recent 30 days) | 18%(C's ratio today) |
| | agent D | 5005.8\$ earning today(5000\$ cashable amount today) | 158,000.87\$(Total earning in the recent 30 days) | 22%(D's ratio today) |

- Case 1: A have no own hostesses, just want to earn from the sub-agents(B、C、D)

Calculation:

A's Total earning in the recent 30 days = $3338.88 + 15,888.68 + 158,000.87 = 177,228.43\$$  22%
A's ratio today

A's Commission today form B: $22\% - 10\% = 12\% * 100 = 12\$$;

A's Commission today form C: $22\% - 18\% = 4\% * 500 = 20\$$;

A's Commission today form D: $22\% - 22\% = 0\% * 5000 = 0$;

A's Total Commission today: $12 + 20 + 0 = 32\$$

Example of calculation of agent's Commission

| | | | | |
|---------|--------------------------|---|--|----------------------|
| agent A | agent B | 101\$ earning today (100\$ cashable amount today) | 3338.88\$ (Total earning in the recent 30 days) | 10%(B's ratio today) |
| | agent C | 501.2\$ earning today(500\$ cashable amount today) | 15,888.68\$(Total earning in the recent 30 days) | 18%(C's ratio today) |
| | agent D | 5005.8\$ earning today(5000\$ cashable amount today) | 158,000.87\$(Total earning in the recent 30 days) | 22%(D's ratio today) |
| | A's own direct hostesses | 1500.88\$ earning today(1500\$ cashable amount today) | 150,000.88\$(total earning in the recent 30 days) | |

● Case 2: A have own direct hostesses, A's direct hostesses'total earning in the recent 30 days is 150,000.88\$

Calculation:

A's Total earning in the recent 30 days = $3338.88 + 15,888.68 + 158,000.87 + 150,000.88 = 327,229.31\$$ \longrightarrow 22%

A's ratio today

A's Commission today form B: $22\% - 10\% = 12\% * 100 = 12\$$;

A's Commission today form C: $22\% - 18\% = 4\% * 500 = 20\$$;

A's Commission today form D: $22\% - 22\% = 0\% * 5000 = 0$;

A's commission today form his own direct hostesses: $1500 * 22\% = 330\$$;

A's Total Commission today: $32 + 330 = 362\$$

Settlement and Payment

01

As long as your withdrawable amount is $\geq 10\$$, you can initiate a withdrawal every day, and the withdrawal amount will reach your bound Metwallet in real time.

02

A hostesses **MUST** pass face verification and bind her own phone number or Gmail and a valid Metwallet account under her Chamet account **BEFORE** withdrawing salaries.

03

The salaries are sent to hostesses directly, and the commission fees are sent to agents directly.

* (The salaries of Indian hostesses are also sent to hostesses directly)

(Due to policies of different countries, Bahrain agents will also get the salaries of their hostesses and pay them separately.)



Rules for agencies

01

It is not allowed to bind hostesses who have been working in Chamet already. We will stop cooperation and hold the payments as long as we find it.

02

It is not allowed to bring Chamet's hostesses to other Apps. We will stop cooperation and hold the payments as long as we find it.

03

Agency should not cut any payment of hostesses, we pay considerable commission separately.



Rules of Cash-out

Apply to salary of hostesses and commission of agencies:

1. You can withdraw your yesterday's salary everyday.
2. The cash-out amount must be $\geq \$10$.
3. The withdrawal amount must be an integral multiple of 10, the remainder will be accumulated and cashed out in the next time when you withdraw.
4. If the callers request a refund from Google or Apple or other ways, we will deduct the corresponding amount from related hostesses.
5. Agencies's commission calculation update: The agent daily commission ratio is determined by your hostesses' and sub-agents' total earning in the recent 30 days.
6. For new agents (Registration duration is less than 30 days), the agent daily commission ratio is determined by your hostesses' and sub-agents' total earning from your registration day to yesterday.



Rules for Hostesses

Some violations would cause strict punishment such as banning the hostess from Chamet, confiscation of related agency's commission. The following situations are strictly forbidden!



A hostess registers more than one account in Chamet.



A hostess switches agency to others, or an agent entices hostesses inside Chamet to join his/her own agency.



A hostess presents pornographic content during Live or private video call.



A hostess who is under 18 years old.

Chamet Standards for Hostesses

Also, we use Chamet Standards to regulate some behaviors of hostesses. If they ignore the standards or warnings, which will cause the fact that no callers can find them until they correct their unqualified behaviors.



Chamet Standards for Hostesses

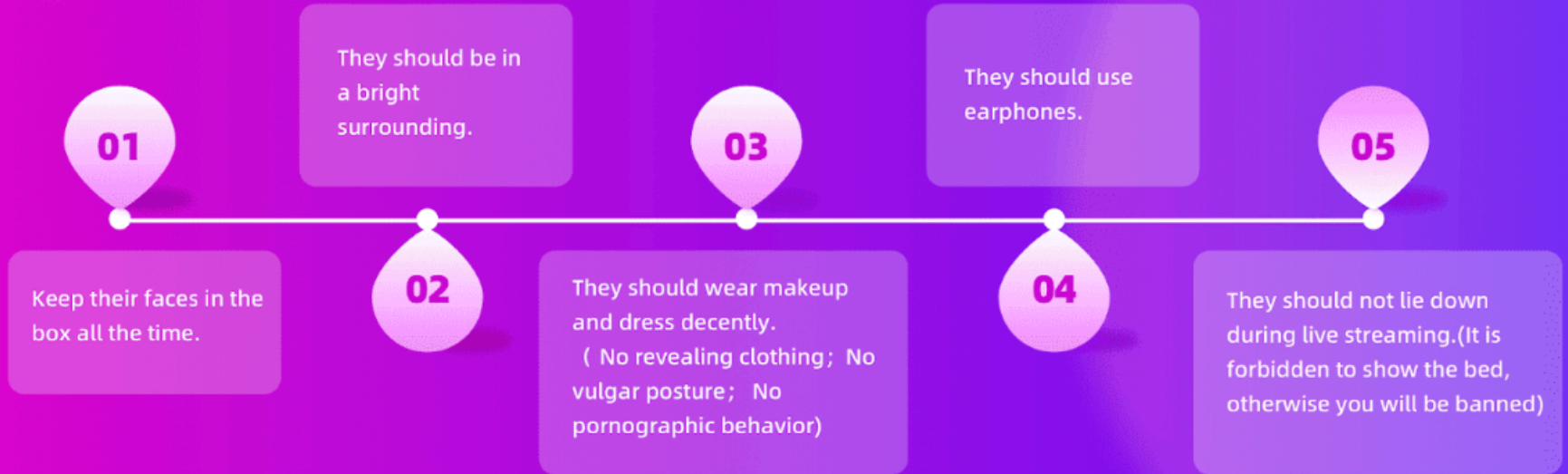
Our AI system helps us to do inspections and they are very sensitive, so please inform your hostesses of avoiding unqualified behaviors. Moreover, our AI system also can screen out hostesses who are not able to earn and then stop distributing calls for them, so you should not recruit hostesses who are not good at this profession because they will be dismissed anyway.



Standards of Live Posters and others



Standards of Live Duration



Registration as An Agency in Chamet

If you accept all the rules mentioned above, you can register as an agency in Chamet. After registration, we will provide a management system (<https://newa4mnou8u5xdi9.rchamet.com/user/login/>) to you, which helps you monitor your hostesses and sub-agents, check their salaries and your revenue, bind hostesses or sub-agents under your agency and so on. Thus, you should master the management system because you will need to operate your team independently.

AGENCY REGISTRATION FORM →

